



**Philip Seccombe  
Police and Crime  
Commissioner  
for Warwickshire**

## **OPCC PERFORMANCE SCRUTINY**

### **WARWICKSHIRE POLICE**

**May 2020**

<b>AUTHOR</b>	David Patterson - OPCC
<b>DATE</b>	19 <sup>th</sup> June 2020
<b>VERSION</b>	v1
<b>GSC</b>	<b>OFFICIAL</b>

## **FORCE PERFORMANCE SCRUTINY**

### **1. Information**

The purpose of this report is to formally scrutinise Warwickshire Police's performance during May 2020, and in doing so allow informed discussion between the Warwickshire Police and Crime Commissioner (PCC) and the Chief Constable (CC) at their forthcoming 'Performance Accountability Meeting' (PAM) on Tuesday 23<sup>th</sup> June 2020. This aim is coherent with the PCC's statutory responsibilities to: -

- Hold the Chief Constable to account for the performance of the force.
- Secure an effective and efficient police service for Warwickshire.

This purpose is also consistent with monitoring the progress made by the force in support of the four key priorities of the PCCs 'Police and Crime Plan 2016 - 2021' namely: -

- I. Putting Victims and Survivors First.
- II. Ensuring an Effective and Efficient Police Service.
- III. Preventing and Reducing Crime.
- IV. Protecting People from Harm.

The report has primarily been prepared through scrutiny of the performance data and information provided in the following reports: -

- App A - Warwickshire Police Monthly Report - May 2020.
- App B - Warwickshire Police Weekly Covid Report - 15/06/2020.
- App C - Warwickshire Police Weekly Performance Summary Report - 20/06/2020.

The commentary received by the OPCC from the force regarding the impact of Covid 19 on the availability and presentation of performance data, with the intention to move back to the more usual reporting document to capture force performance during Q1 of 2020/21, is noted and understood.

Not all aspects of performance are commented upon in this report, only those areas of particular interest. However, it should be noted that it is becoming increasingly difficult to identify performance trends and issues through the use of comparative temporal data due to the impact of Covid 19 on both the volume and nature of demand; compounded by changes to resources and variations in working practices and procedures.

### **2. Total Recorded Crime.**

The latest weekly performance data available (20/06/2020) at the time of report shows that Total Recorded Crime (TRC) has decreased by -16% YTD when compared to the same period in 2019/20.

There have been very significant reduction in almost all crime categories, of particular note are Violence with Injury (-18%), Burglary Residential (-49%), Vehicle Offence (-33%).

The exception to this positive position continues to be Violence without Injury (+12%). This category accounts for 28% of all TRC YTD and as such significantly impacts on the TRC figure and detracts from the significant gains made in serious and iconic crime categories.

The reduction in TRC over the last seven day period of -2.2% would appear to be indicative of an increasing return to 'normality' as the Covid 19 lock-down continues to ease.

### **3. Anti-Social Behaviour.**

From the latest weekly performance data available the volume of ASB reports continues to remain high at +55% YTD / 74% for the month / 62% for the week when compared to the same periods in 2019/20. The impact of Covid 19 is clearly impacting significantly on these figures, where 75% of all ASB incidents are Covid related and amounted to 10% of all incidents reported during the weekend of the 13<sup>th</sup> and 14<sup>th</sup> June 2020. Hopefully this demand will reduce as lock-down continues to ease.

### **4. Vulnerability.**

- **Hate Crime**

From the latest weekly performance data available, Hate Crime offences and crimed incidents are now showing a YTD increase of 9.8%, with a concerning increase of 56% during the current 28 day period when compared to the same period in 2019/20. The easing of the Covid 19 lock-down and the societal tensions amplified through the BLM movement may be a contributory factor in this increase.

- **Domestic Abuse**

As anticipated, the YTD figures for Domestic Abuse (DA) offences and crimed incidents has notably increased (+12%) as we continue in the Stay Alert phase of Covid 19. The magnitude of DA in terms of both % and volume (2,490) is comparatively similar to that of Violence without Injury (2,043). It is presumed that given the often violent nature of DA incidents that this is the driver for the increase seen in this crime category and the consequential adverse impact on the TRC figure.

It should be noted that the reporting of DA by victims is actively encouraged and increased levels can be viewed as a positive development. Preventing repeat DA victimisation is where the force has placed its focus and the Q1 performance report in this regard is awaited with particular interest.

- **Vulnerable Adult**

As anticipated, the YTD figures for Vulnerable Adult offences and crimed incidents has notably increased (+47%) as we continue in the Stay Alert phase of Covid 19. The situation where more adults are considered to be vulnerable during this period is of obvious concern, however the fact that increased reporting is being conducted in order to inform the relevant agencies through the MASH process can be considered a positive development. Reassurance has been sought from the

Chief Constable at a previous PAM that the MASH are presently able to meet this increased demand.

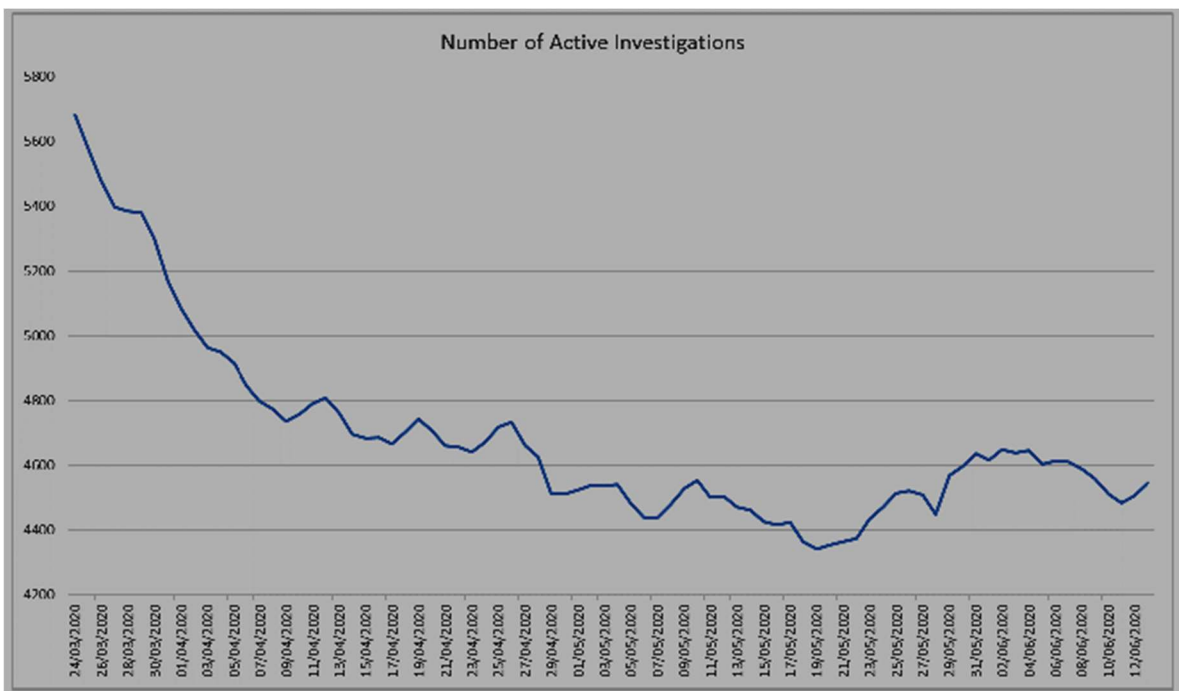
- **Child Exploitation**

As anticipated, the YTD figures Child Exploitation offences and crimed incidents (-50%) has notably decreased during Covid 19 as many children remain out of school and as a consequence such matters do not come to the attention of the authorities.

**5. Investigations and Outcomes.**

The information contained in the Warwickshire Police Weekly Covid Report - 15/06/2020 is a welcome addition to the force’s performance reporting and contains KPI’s that are extremely relevant in the current pandemic emergency.

The below graph illustrating the decrease in the number of Active Investigations since the commencement of Stay Home on the 23<sup>rd</sup> March 2020 is impactful, showing a reduction from 5.7k at the start to just over 4.5k at present.



- **Positive Action**

In terms of Positive Action Outcomes for TRC, the figures for May 2020 are at 14% and whilst this represents a decrease on the previous month of 17%, the percentage figures for the last five consecutive months since the start of 2020 are above the linear line that tracks back to April 2017. This would appear to show an upward trend and sustained signs of improvement.

A similar position also exists in terms of DA Positive Action Outcomes with a figure of 13% for May 2020 and improvements seen throughout 2020.

- **DA Outcome 16**

The high levels and wide fluctuation that were evident throughout 2017/18 and 2018/19 for DA Outcome 16 disposals, and which were subject to HMICFRS comment, have continued on a downward trajectory and have now stabilised at circa 56% for the last twelve months - a positive development!

## **6. Road Safety.**

The latest data for April 2020 reveals that there was one road fatality for the month and that the number of KSI's has also decreased. The impact of Covid 19 in restricting movements and in turn reducing the volume of traffic on the roads was a clearly a contributory factor in this reduction, although reports of excessively high speeds during this period often appeared in the media.

Of note is the continuing disproportionate rate of motorcyclists (19%) and cyclist (13%) that constitute these KSI casualties.

## **7. Operations Communication Centre.**

The latest performance data available at the 14<sup>th</sup> June 2020, shows that weekly performance for 999 emergency calls was at 92% of calls answered within 10 seconds, against a target of 90%.

The current performance for non-emergency 101 calls during the same period was 72% answered within 30 seconds, against a target of 80%, with an average wait time of 43 seconds.

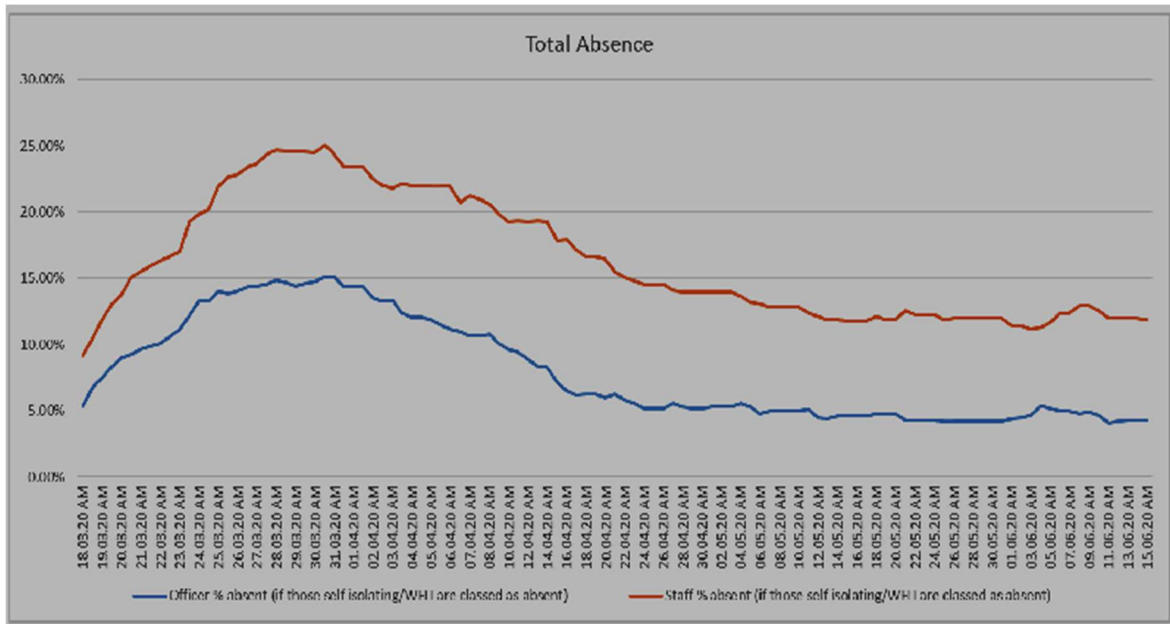
The performance of the OCC in terms of both emergency and non-emergency calls therefore continues to be relatively strong, despite the reduced OCC resources available due to Covid 19 self-isolation and the changes in facilities and processes required through social-distancing in the OCC.

- **Single Online Home**

The figures for Single Online Home are relatively stable at an average of 12 per day during this same period.

## **8. Absence Rates**

The below graph illustrates the impact of Covid 19 on police officer absence rates in the early stages of the Covid 19 pandemic, which has now reduced and stabilised. The situation with 'absence' through isolation and working from home is still pertinent.



## 9. Personal Protective Equipment

The dashboard produced in the Warwickshire Police Weekly Covid Report - 15/06/2020 of the level of stock of the various PPE held by the force provides reassurance that the force is adequately prepared.

## 10. Covid Secure

The pie charts contained in the aforementioned Covid Report are also useful reference as to the progress the force are making in implementing the requirements of Covid Secure to protect the workforce and the public who they interact with.

## 11. Comments

It's requested that the Chief Constable provides his professional judgement to the Police and Crime Commissioner regarding the key challenges with force performance over the short term to medium term, particularly in respect of the following areas identified: -

1. Hate Crime - Community tensions, proactive engagement and de-escalation.
2. Domestic Abuse - Correlation with Violence without Injury and its impact on TRC figures.
3. Child Exploitation - Proactive identification of cases and the forces capability and response.
4. Covid 19: -
  - a) The ongoing impact and implications across the organisation.
  - b) Progress of Covid Secure arrangements.
  - c) The potential for a spike in demand as business as usual returns.
  - d) Progress of plans for post-recovery efficacy savings and new ways of working.

Subject to agreement, it is proposed that the future PAM deep-dive subjects for 2020/21 are: -

- July - Learning and Development
- August - Covid Secure arrangements and Adherence

- September - Black Lives Matter

David Patterson.

OPCC Development and Policy Lead - Performance.