



# Strategic Assessment

2020  
.....  
2021



Warwickshire  
**POLICE**

#WeAreWarwickshire

# Summary

This Strategic Assessment provides an overview of the criminality facing Warwickshire Police and helps us to set our long-term priorities. This assessment is designed to complement the Warwickshire Police Force Management Statement and has used the same time parameters and data sets. We recommend reading it in conjunction with our Fit for the Future strategy, which sets out how the force will deliver on its enduring vision to protect people from harm over the next five years, and the Police and Crime Plan from Warwickshire's Police and Crime Commissioner.

We assess that County Lines, Domestic Abuse, Child Sexual Exploitation and Modern Slavery and Human Trafficking are causing the highest levels of harm within our communities and we will continue to prioritise these threats to realise our vision of protecting people from harm. We will also focus on Serious Organised Crime and Acquisitive Crime which we assess will give us a holistic approach to tackling crime in our communities.

## Our Vision and Values



# Fit for the Future – Our Strategic Priorities



## Prevent and Protect

*Working proactively to reduce crime and the harm experienced by our communities, particularly the most vulnerable*

We will **focus on:**

- Reducing crime and the harm affecting communities
- Working proactively to prevent crime and understand the nature and causes of problems that affect communities
- Disrupting and dismantling serious and organised crime, including the threat from crime that originates outside our borders
- Protecting the most vulnerable



## Respond and Reassure

*Ensure public confidence in Warwickshire Police by delivering a high quality service to all*

We will **focus on:**

- Delivering quality investigations and improved criminal justice outcomes
- Ensuring victims have a positive experience
- Delivering an effective and appropriate response to all requests for service
- Engaging and reassuring our communities



## Effective and Efficient

*The delivery of first class operational policing is underpinned by first class organisational support services*

We will **focus on:**

- A growing workforce that is inclusive and representative of the communities we work within, with the right skills and equipment to do the job
- Ensuring the safety and wellbeing of officers and staff
- Being an employer of choice which attracts, recognises and retains the very best people

People

Culture

- Embedding our values and ensuring a one team ethos
- Strengthening partnerships and collaboration with other forces and external agencies
- Promoting a learning culture

- Developing an estate that reflects modern day policing requirements
- Offering modern digital services that meet the needs of communities, staff and partners
- Enhancing the use of data to provide insight, improve decision-making, and to drive performance improvement

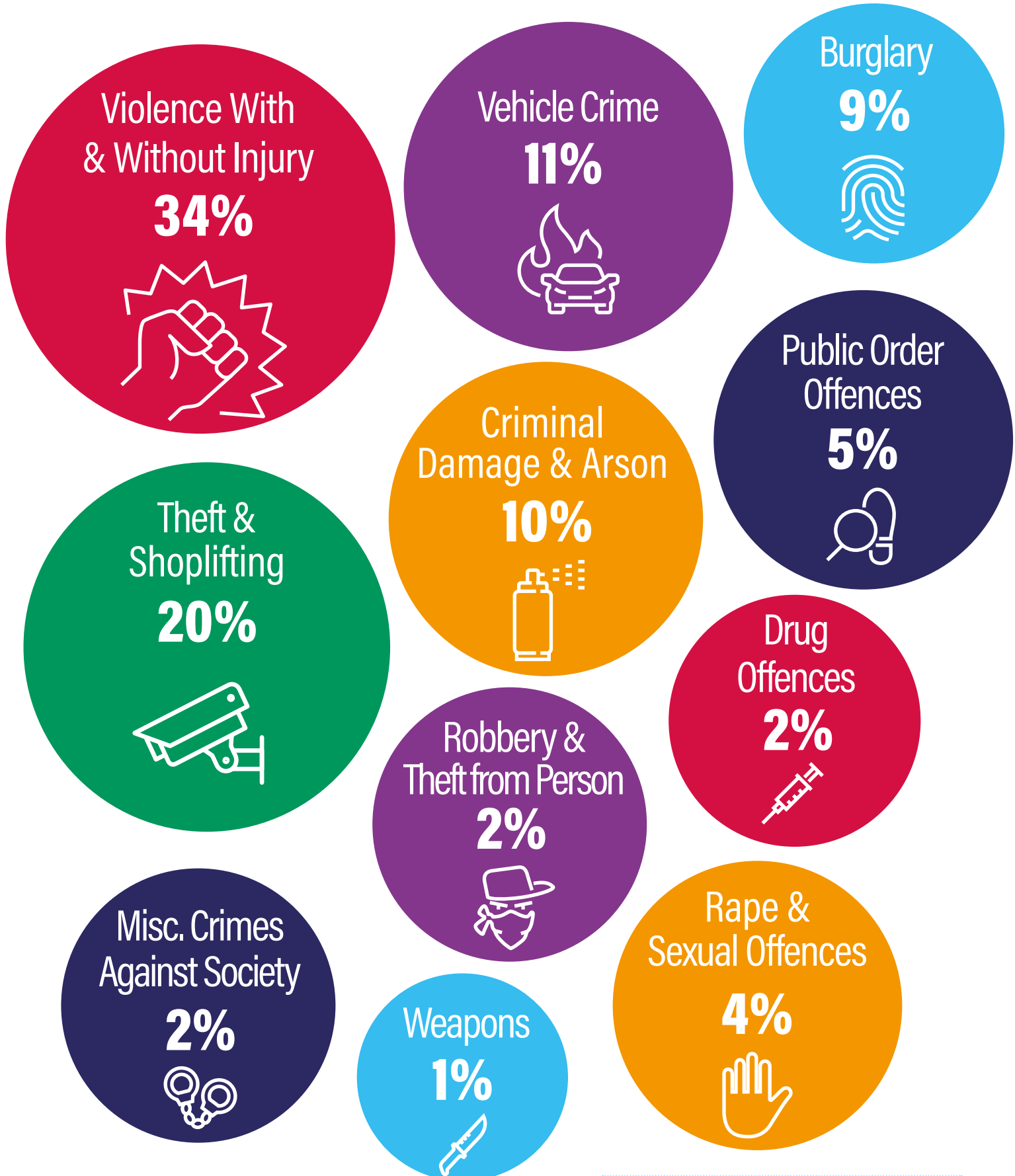
Infrastructure

Sustainability

- A commitment to a greener force, which positively contributes to a sustainable environment
- Delivering a good and balanced budget
- Developing a clear understanding of the current and future demands on policing and how the force can respond to these

# Crime in Warwickshire

Compared with 2019- 2020, total recorded crime has remained stable. Recorded crime is influenced by many factors, including the police response, crime recording practices and external events. The breakdown of crime in 2019-2020 is shown below:





# Enablers

For the first time in our strategic assessment, we have considered what enables crime in Warwickshire and found three key themes that emerge from the threats that we face:

## Violence

Violence, or the threat of violence, are key to enabling many of the most harmful crime types.



## Technology

The ubiquity of mobile phones means they are used in nearly every crime type. The evolution of technology will present a diversifying threat, with criminals likely to exploit new technology to facilitate crime.

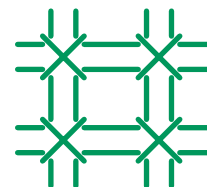


## Transport Networks

Warwickshire hosts a disproportionately large part of the Strategic Road Network (SRN) and is impacted by criminality travelling to and through Warwickshire. This also presents opportunities to disrupt criminality.



# Serious Organised Crime



**We will protect individuals and organisations by working with partners to deliver our SOC strategy.**

Warwickshire experiences a broad range of Serious Organised Crime (SOC) including County Lines, Modern Slavery and Human Trafficking (MSHT) and fraud. Most Organised Crime Groups (OCGs) in Warwickshire are involved in the supply of illegal drugs.

---

## County Lines



**We will better understand the drugs market in Warwickshire, safeguarding victims of county lines and pursuing identified offenders/networks.**

County Lines is a term used to describe gangs and organised criminal networks involved in exporting and selling illegal drugs to an importing area, using dedicated phone lines. County Lines often exploit children and vulnerable adults to move and store the drugs and money. They are likely to use coercion, intimidation, violence (including sexual violence) and weapons. The transportation and sale of illegal drugs coupled with the targeting of vulnerable people and violence make this one of the most harmful crime types. The central location of Warwickshire within the UK makes us vulnerable to this threat.

---

## Modern Slavery and Human Trafficking



**Through the Serious Organised Crime Agenda, we will encourage reporting of Modern Slavery and Human Trafficking (MSHT) from the wider Warwickshire community and bring offenders to justice.**

The clandestine nature of MSHT makes it challenging to assess the extent that Warwickshire is impacted by this crime. We assess that our road networks and rural locations present opportunities for MSHT.

---

## Child Sexual Exploitation



**We will work in partnership to identify and safeguard victims and establish links to county lines and other offending.**

We assess that Child Sexual Exploitation (CSE) remains under reported and are committed to working with partners to identify and safeguard victims. We have established a Child Abuse Trafficking and Exploitation (CATE) Team to tackle the complex investigative challenges that we face.

---

# Domestic Abuse



**We will Work in partnership to provide the best service to victims and deal effectively with perpetrators.**

While we are better recording Domestic Abuse than ever before it remains a significant concern to the force because of the long term physical and psychological impact on victims. Technology gives offenders growing ways to stalk, harass and control victims and we will continue to work closely with partner agencies to safeguard those at risk from Domestic Abuse.

---

## Acquisitive Crime



**We will work with communities to prevent acquisitive crime and pursue those responsible.**

While we have seen reductions in the levels of some types of acquisitive crime, we assess it is an indicator of other criminal activity. Acquisitive crime can also be organised, such as vehicles that are stolen so their parts can be resold or used in the commission of other offences, such as transporting stolen goods. We have a number of strategies for tackling this type of crime, including problem solving with our partners to disrupt this criminal activity.







**Thank you for taking the time to read this document.**

If you have any feedback or comments please visit our website and contact us at: [www.warwickshire.police.uk](http://www.warwickshire.police.uk)