

A safer, more secure Warwickshire



My aim as your Police and Crime Commissioner has been to create a safer, more secure Warwickshire for all residents, communities and businesses. Against a backdrop of rising levels

of crime, an expanding population and the changing nature of crime, I need to ensure that our police are properly equipped, trained and enabled with the latest tools and technology to make them more visible and effective.

I am grateful for the number of people who took the time to express an opinion and complete my public consultation. From the results and the comments received, it's clear that the public wants to see more police on their streets and for officers to continue to focus on tackling the issues that matter most to local communities.

While increases in council tax are never welcome, the majority of the responses received from the public support my assessment that in order to safeguard the continued delivery of an effective service to the public, Warwickshire Police needs more funding. The consultation has also shown strong support for a proposed maximum increase of 6.25%, which is the equivalent of a pound extra a month for Band D taxpayers. I am therefore taking this option forward for 2018/19.

Without a cash boost of this scale, Warwickshire Police would face having to lose around 60 police officer posts over the medium term – a position that would lead the force to make very difficult choices over a reduced the level of service to the public. I do not think this is acceptable and my consultation emphasised that this is not what the public or local businesses wants to see either.

I also share the desire expressed by many that the extra funds raised through a Council Tax increase must be used to boost frontline policing here in Warwickshire. The Chief Constable has committed to increasing recruitment of new and transferring officers with the additional funds that this rise in Council Tax makes available. This will mean that he will be able to safeguard around 50 officer posts in Warwickshire which would otherwise have been lost.

I will also continue to support a wide range of initiatives which help to deliver my Police and Crime Plan, which seeks to:

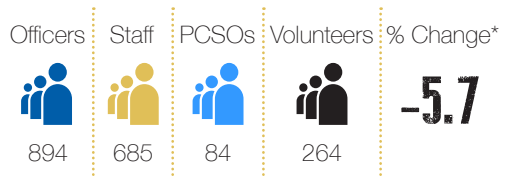
- Put victims and survivors first
- Ensure efficient and effective policing
- Protect people from harm
- Prevent and reduce crime

This will include providing grant support to locally-delivered services and community initiatives and through co-commissioned services for victims of crime, domestic abuse and child sexual exploitation.

Through a continuing programme of investments in technology, mobile working and by maintaining the focus on delivering efficiency savings, I intend to enable Warwickshire Police to provide the public with enhanced confidence in policing and increase their visibility, while also mitigating some of the pressures that frontline officers experience.

Philip Secombe TD

Workforce



* These figures represent our planned workforce for Warwickshire as of 1/4/18. These figures are based on the estimated number of full time equivalent employees in all categories, except for volunteers where a pure head count is used.



Website: www.warwickshire-pcc.gov.uk

Write to: Philip Secombe, Police and Crime Commissioner for Warwickshire, 3 Northgate Street, Warwick, CV34 4SP



Email: opcc@warwickshire.pnn.police.uk

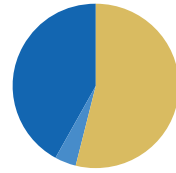
Phone: 01926 412322

Council Tax Band - what will I pay?

A	B	C	D
£135.99	£158.65	£181.32	£203.98
E	F	G	H
£249.31	£294.64	£339.97	£407.96

The amount you pay for the police service will increase by 6.25% in 2018/19. Council tax bands are calculated to four decimal places, but presented here to two decimal places, therefore they may vary by +/- 0.01p.

How are the police funded?



- Central government funding (£52.94m)
- Savings reserves (£3.77m)
- Council Tax (£41.49m)

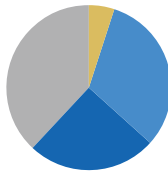
How the money is spent?

In 2018/19 we plan to spend £104.93m before income and use of reserves. Our day-to-day spending (net of fees, specific grants and reserves) is £94.43m. The expenditure on police services has increased by £0.84m.

Spending	2017/18	2018/19	
	Spending £ millions	Spending £ millions	Cost for each person £
Expenditure on police services	104.540	104.925	188.46
Income	-7.015	-6.722	-12.07
Total cost of service	97.825	98.203	176.39
Transfer from reserves	-6.763	3.772	-6.78
Our budget	91.062	94.431	169.61
Less funding from the Government			
Police grant	-30.602	-30.602	-54.97
Revenue support and business rates	-17.180	-17.180	-30.86
Council tax support grant	-3.910	-3.910	-7.02
Council tax freeze grant	-1.245	-1.245	-2.24
Council Tax	38.125	41.494	74.53

Capital spending

This chart shows our planned capital spending of £7.9m in 2018/19. This is funded by borrowing, Government grant and the sale of police properties.



- Central government funding (£0.4m)
- Receipts from property sales (£2.5m)
- Reserves (£2.0m)
- Borrowing (£3.0m)

How the money has changed

Our budget has increased by £3.369m

	£ millions
Our budget 2017/18	91.062
Savings	-3.254
Inflation, pressures and developments	3.632
Movement in the use of reserves	2.991
Our budget 2018/19	94.431