



# A safer, more secure Warwickshire



As your Police and Crime Commissioner, I want to create a safer, more secure Warwickshire for all residents, communities and businesses. To do that, I need to ensure that our police are properly equipped, trained and

motivated with the latest tools and technology to make them more effective.

At the same time, I recognise that these are very difficult economic times for many people and Warwickshire taxpayers deserve to know their money is being well spent. Getting the greatest impact for every pound spent is crucial.

For that reason, in the coming financial year I am **freezing the policing precept** at 2016/17 levels – meaning that the amount you pay for policing will not change – while also continuing to invest in a programme of modernisation and reform.

By making use of continued efficiency savings and through use of financial reserves, I will **invest an additional £1.1m** to ensure that Warwickshire Police remains well-placed to meet the challenges of both today and tomorrow.

Through this investment I aim to ensure that frontline policing is both protected and enhanced, the most vulnerable in society are protected and that the issues that matter most to local communities continue to be addressed.

**Philip Seccombe TD**

## What I will deliver:

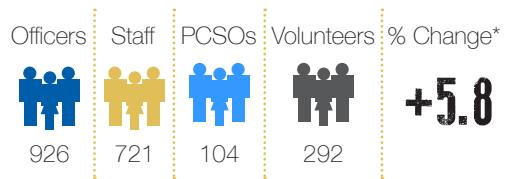
My budget is designed to support my Police and Crime Plan priorities which:

- Put victims and survivors first
- Ensure efficient and effective policing
- Protect people from harm
- Prevent and reduce crime.

I will do this through:

- Investing in restorative justice and victims' services, with specialist support for the vulnerable.
- The introduction of new technology to enable mobile working and reduce bureaucracy, freeing up police officer time and allowing them to spend more of it in the community.
- Extra investment in services to protect people from harm, including an additional 22 police officers to investigate Child Sexual Abuse.
- Continued investment in initiatives to address business rural and cyber crime.

## Workforce



\* These figures represent our planned workforce for Warwickshire as of 1 April 2017.

These figures are based on the estimated number of full time equivalent employees.



Website: [www.warwickshire-pcc.gov.uk](http://www.warwickshire-pcc.gov.uk)



Email: [opcc@warwickshire.gov.uk](mailto:opcc@warwickshire.gov.uk)

Write to: Philip Seccombe, Police and Crime Commissioner for Warwickshire, 3 Northgate Street, Warwick, CV34 4SP

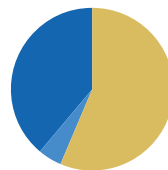
Phone: 01926 412322

## Council Tax Band - what will I pay?

A	B	C	D
£127.99	£149.32	£170.65	£191.98
E	F	G	H
£234.64	£277.30	£319.97	£383.96

The amount you pay for the police service will remain the same in 2017/18. Council tax bands are calculated to four decimal places, but presented here to two decimal places, therefore they may vary by plus/ minus 0.01%

## How are the police funded?



- Central government funding (£120.2m)
- Savings reserves (£9.7m)
- Council Tax (£82.3m)

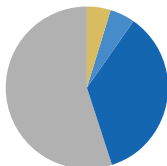
## How the money is spent?

In 2017/18 we plan to spend £104.1m before income and use of reserves. Our day-to-day spending (net of fees, specific grants and reserves) is £91.1m. The expenditure on police services has increased by £1.8m.

Spending	2016/17	2017/18	
	Spending £ millions	Spending £ millions	Cost for each person £
Expenditure on police services	102.340	104.087	187.88
Income	-6.186	-6.819	-12.31
<b>Total cost of service</b>	<b>96.154</b>	<b>97.268</b>	<b>175.57</b>
Transfer from reserves	-5.049	-6.206	-11.20
<b>Our budget</b>	<b>91.105</b>	<b>91.062</b>	<b>164.37</b>
<b>Less funding from the Government</b>			
Police grant	-31.036	-30.602	-55.24
Revenue support and business rates	-17.425	-17.180	-31.01
Council tax support grant	-1.244	-1.245	-2.25
Council tax freeze grant	-3.910	-3.910	-7.06
<b>Council Tax</b>	<b>37.080</b>	<b>38.125</b>	<b>68.82</b>

## Capital spending

This chart shows our planned capital spending of £8.337m in 2017/18. This is funded by borrowing, Government grant and the sale of police properties.



- Central government funding (£0.425m)
- Receipts from property sales (£0.413m)
- Reserves (£2.901m)
- Borrowing (£4.598m)

## How the money has changed

Our budget has reduced by £0.043m

	£ millions
<b>Our budget 2016/17</b>	<b>91.105</b>
Savings	-6.221
Inflation, pressures and developments	7.335
Movement in the use of reserves	-1.157
<b>Our budget 2017/18</b>	<b>91.062</b>